

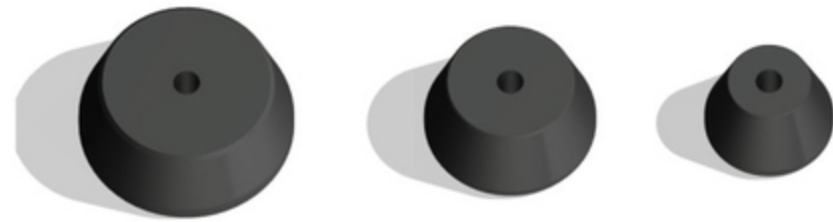
ADATTATORI per bilanciatrice statica
ADAPTERS for static balancer



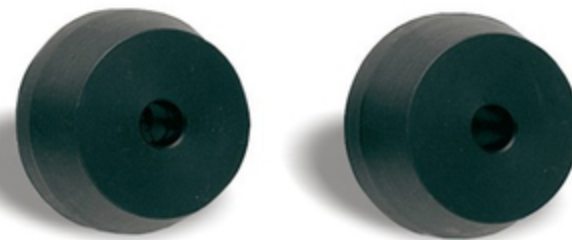
B-AU

Kit di 3 coni componibili che permette di lavorare su praticamente tutti i cerchi moto e scooter.

3 cones universal kit that allows to operate on almost all models of motorcycle and moped rims.



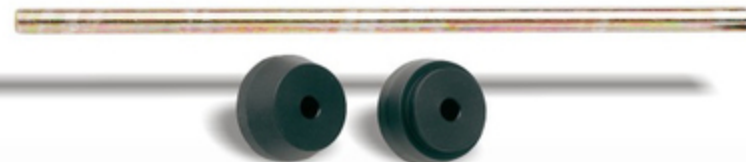
B-A00 Adattatore standard diam. 12mm
Standard adapter diam. 12mm



B-A01 Adattatore monobraccio
Single sided swing-arm adapter

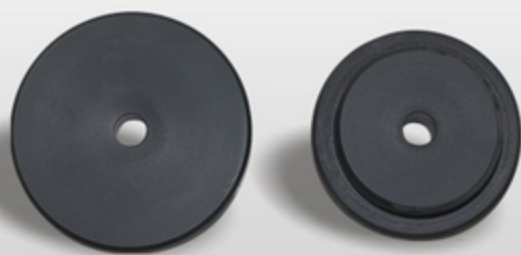


B-A03 Adatt. Maxi scooters diam. 10mm
Maxi scooters adapt. diam. 10mm



B-A02 Adattatore BMW
BMW Adapter

B-A04 Adattatore Piaggio X9
Piaggio X9 Adapter



B-A05 Adattatore BMW dal 2006
BMW Adapter since 2006



BL-124-01 Adattatore BMW 1200
BMW 1200 adapter

ES-06

Supporto Motore Mobile
Engine Stand

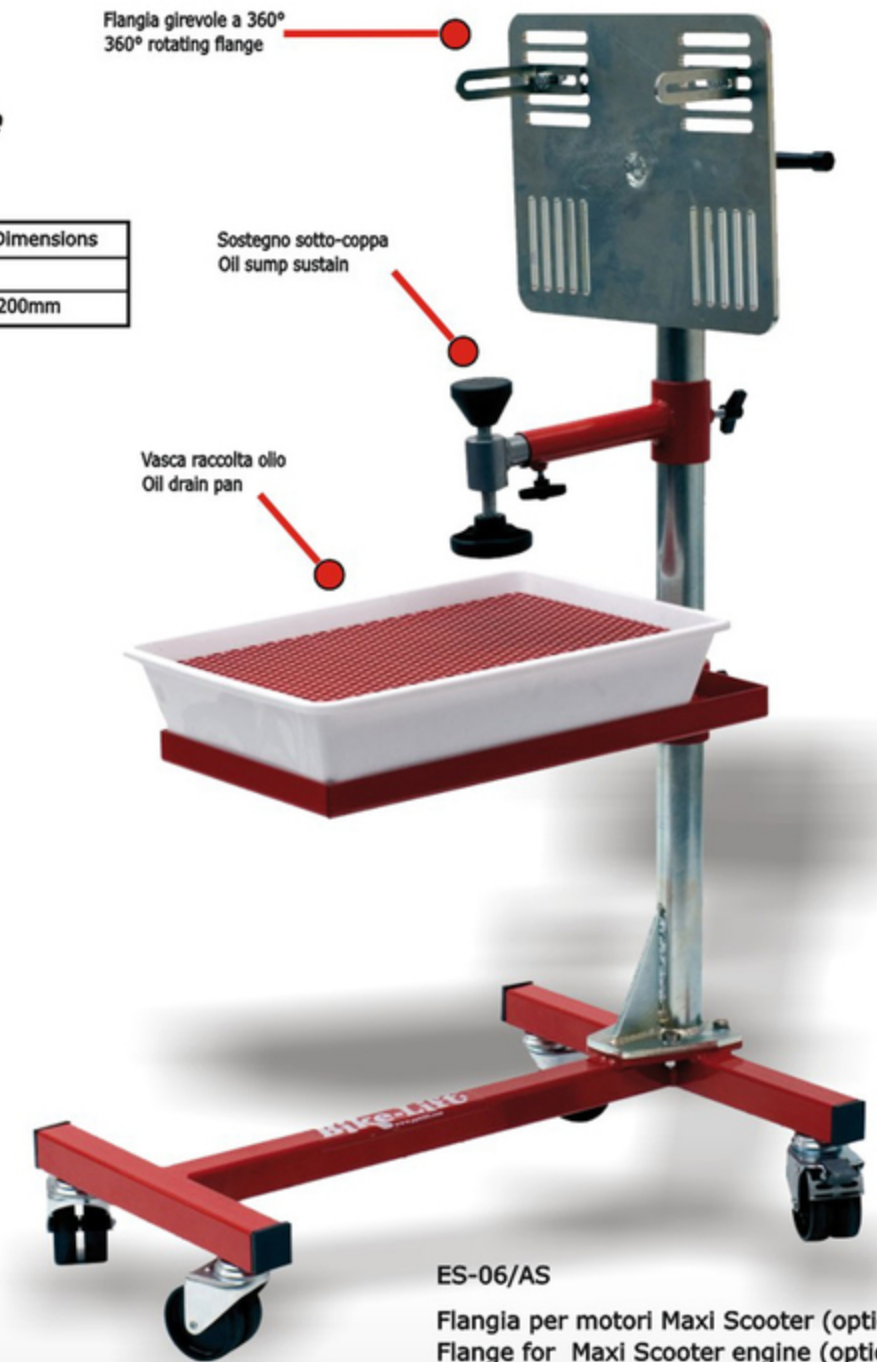
Codice / Item No.	Peso/Weight	Dimensioni / Dimensions
ES-06	25 kg	500x700x1200mm



Flangia girevole a 360°
360° rotating flange

Sostegno sotto-coppa
Oil sump sustain

Vasca raccolta olio
Oil drain pan



ES-06/DUC

Flangia per motori Ducati (optional)
Flange for Ducati engine (optional)

ES-06/AS

Flangia per motori Maxi Scooter (optional)
Flange for Maxi Scooter engine (optional)

